



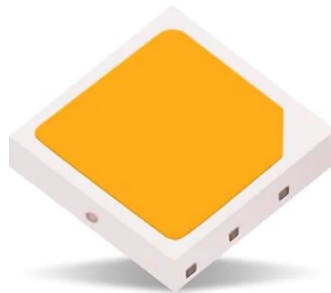
Luminus Releases MP-3030-120H Ultra High-Performance Mid-Power LEDs

Industry Leading Lumens/Watt for High-Performance General Lighting and Horticulture Applications

SUNNYVALE, Calif., July 1, 2021, [Luminus Devices](#) announces the launch and immediate availability of a new high efficacy family of [3030 Mid-Power](#) LEDs designed for high-performance general lighting and horticulture applications. These new MP-3030-120H ultra high-performance LEDs provide low thermal resistance, up to 226 lumens/Watt, high PPF/W, and CRI options of 80, 90 and 95 minimum. In addition, they are compatible with standard SMT reflow solder process and are RoHs and REACH compliant. Customers who are listing their products with DLC can leverage the MP-3030-120H series 9000 hour LM-80 reports in both PPF and lumens with Q90 and L90 >36k hours under a wide range of operating conditions. While competitors are quoting 30+ week lead times, Luminus has inventory at Digikey and Mouser and supports a standard 8 week lead time on new high volume orders.

What makes the MP-3030-120H stand out from other 3030 LEDs? Tom Jory, VP of Illumination Marketing, highlights “we’re really hitting on all cylinders with this much anticipated product launch since the product has outstanding efficacy, solid LM-80 in both PPF and lumens, high quality of light with optional 95 CRI minimum and lead times which enable customers to move quickly.”

This product line is now available through [Luminus’ authorized distributors](#).



For a full list of features, applications and benefits visit <https://www.luminus.com/products/standardmidpower>.

About Luminus Devices

Luminus Devices develops and markets solid-state lighting solutions (SSL) to help its customers migrate from conventional lamp technologies to long-life and energy-efficient LED illumination. Combining technology originated from the Massachusetts Institute of Technology (MIT) with innovation from Silicon Valley, Luminus offers a comprehensive range of LED solutions for global lighting markets as well as high-output specialty lighting solutions for performance-driven markets including consumer displays, entertainment lighting and medical applications. Luminus is headquartered in Sunnyvale, California. For additional information please visit <http://www.luminus.com>.

Contact: Tom Jory

E-mail: tjory@luminus.com